



instant.strong.secure.

thinking inside and outside the box

VENT IT!

Our INSTA LV Vent with screen is easy to install within 30 minutes. The vent comes powder coated and requires no welding or painting.

- Prevents moisture build-up and hazardous fume accumulation.
- Easy to install. Strong and secure.
- Integrated bug screen included. Bolt-on or weld-in application.
- Install on the side or end of the container. Can also be installed on container door.
- 2 to 6 vents recommended for each container depending on length of container.
- Also available in zinc plated, ideal for high-salt environment.

INSTA LV VENT

www.instacm.com

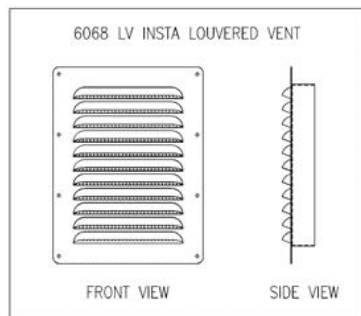
1.866.647.4353



INSTA Container Modifications is a proud charter member of the National Portable Storage Association (NPSA).

#6068 LV INSTA LOUVERED VENT

Installation Guide



Tools Required For Installation

- PPE – Eye protection, gloves, hearing protection, and ensure not to wear loose fitting clothing
- Step ladder
- Measuring tape
- Marking tool
- Extension cord
- Plasma cutter or angle grinder
- Drill
- Self-Tapping screws
- Driver bit for screws
- Sealant



1

1. Ensure all PPE (Personal Protective Equipment) is worn.
2. From the top and side of the #6068 LV INSTA Vent record the opening measurement of the box frame on the backside of vent.
3. Place the top edge of the vent on the container so the outer edge of the mounting frames equally overlap the corrugations.
4. Mark the two edges and using a straight edge draw a line down on both sides.
5. Transfer the opening measurements to the container making sure to center them between the existing two lines.



2

1. Create the outline of the opening using a straight edge to connect the four corners. TIP -an end flap from the vent box works well.

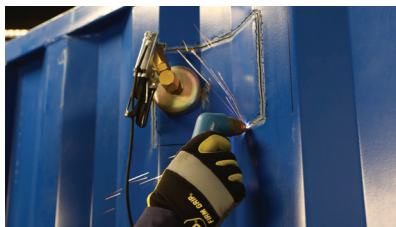


instant.strong.secure.

thinking inside and outside the box

VENT IT!

Our INSTA LV Vent with screen is easy to install within 30 minutes. The vent comes powder coated and requires no welding or painting.



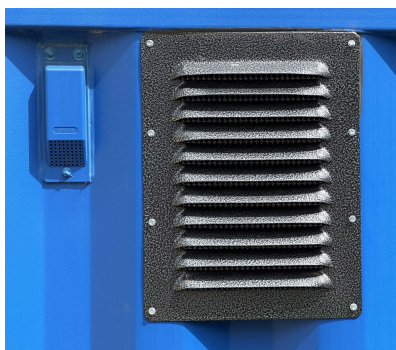
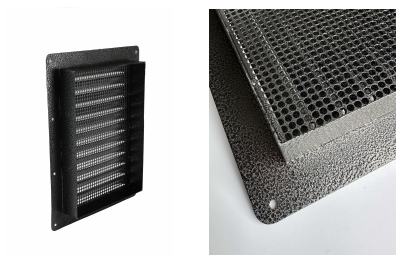
3

1. Using a metal cutting tool carefully cut along the lines.
2. Position the vent in the opening and check the fit to ensure proper alignment.



4

1. Apply a bead of sealant along the left and right sides of the vent.
2. Place the vent against the container.
3. Using self-tapping screws securely attach the vent.
4. Apply a bead of sealant along the top edge of the vent to seal.
5. From the inside of the container apply a bead of sealant along all four edges.



INSTA LV VENT

www.instacm.com

1.866.647.4353



INSTA Container Modifications is a proud charter member since 2008 of the National Portable Storage Association (NPSA).

WARNING - All products that require installation or fabrication should never be done until you have the product in hand to take exact measurements. While every attempt is made to make sure product specifications are accurate, there is the possibility the products have been updated or a small variance between production made the measurement off from what's in this book. Installation of products may require some fabrication experience, and in no way does warranty cover installation mistakes.